



2025 Hurricane Brief



**Marine Corps Recruit Depot Parris Island, South Carolina
and Eastern Recruiting Region**

CUI



Hurricane Terminology

✕ > 60%
✕ 40-60%
✕ < 40%



Tropical Disturbance: Rain & thunderstorms w/ low pressure & slight circulation



Tropical Depression: Storm with cyclone characteristics but less than 39mph winds



Tropical Storm: 39–73 mph

Hurricane: 74 mph or greater

Major Storms

CAT 1

37-95 mph

CAT 2

96-110 mph

CAT 3

111-129 mph

CAT 4

130-156 mph

CAT 5

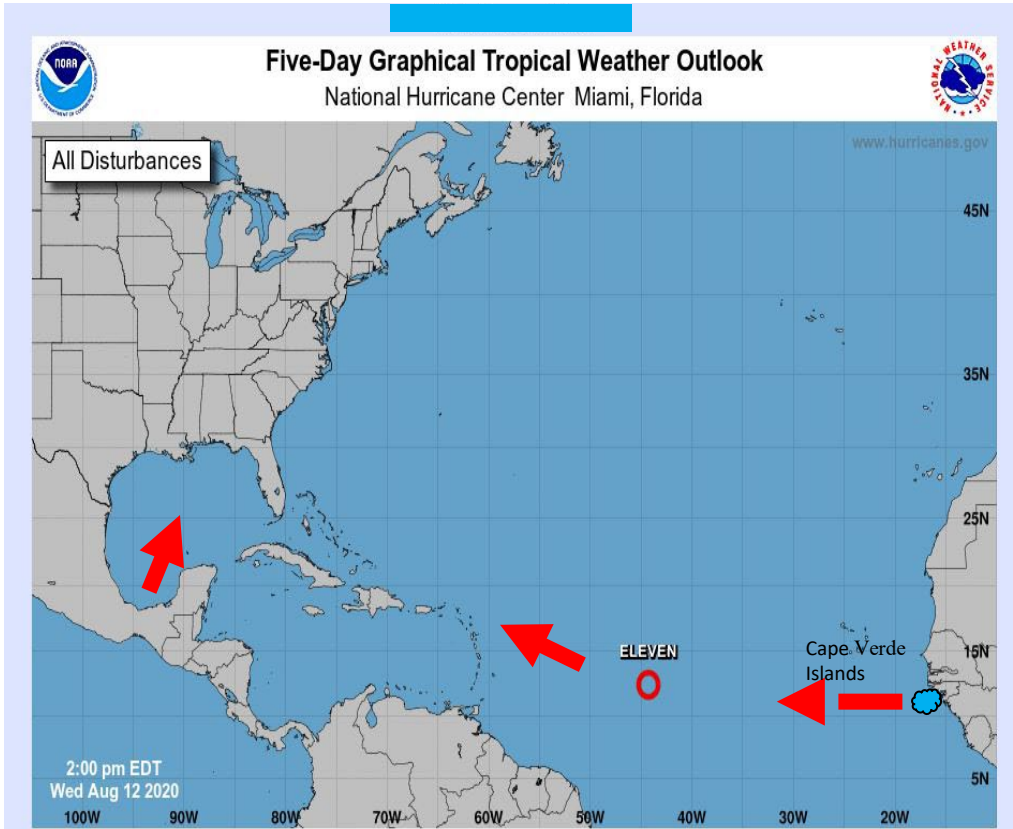
> 156 mph

WATCH set at 48 hours

WARNING set at 36 hours

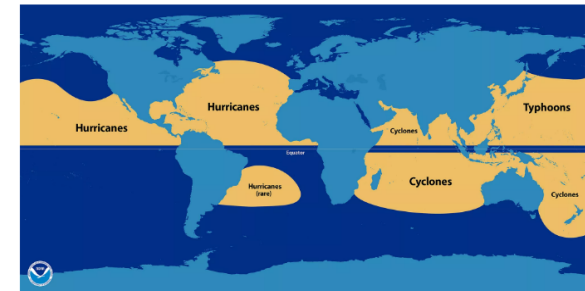


Storm Development



- West Coast Africa
Cape Verde
- Gulf of America/Mexico

- **Hurricanes:** North Atlantic and the eastern/central North Pacific oceans. It is extremely rare for one to form in the South Atlantic Ocean.
- **Cyclones:** western South Pacific and Indian oceans
- **Typhoons:** western North Pacific (around the Philippines, Japan, and China)



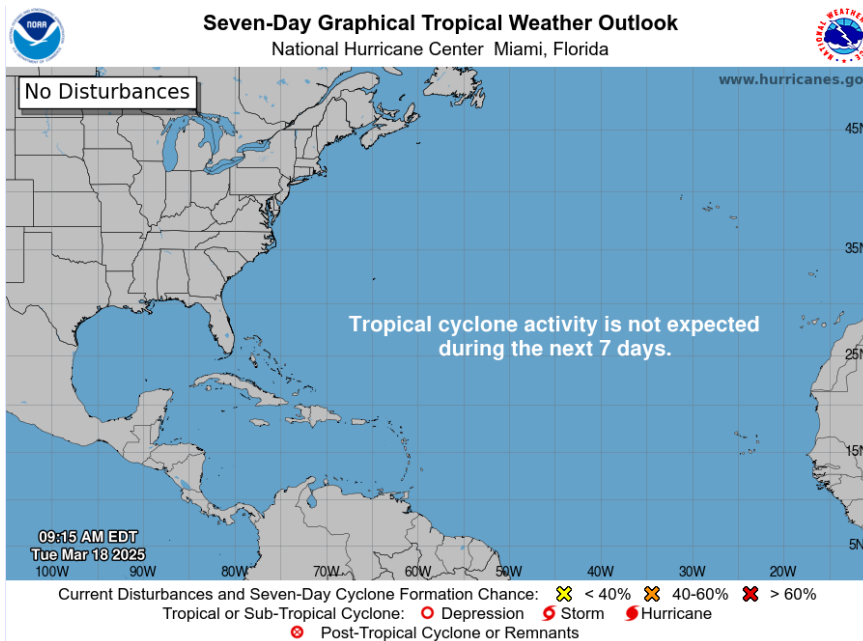


Storm Development and Track

What To Watch For



National Weather Service
National Hurricane Center
Beaufort County Storm Center
<https://www.nhc.noaa.gov/>



Tropical Cyclone Symbols



Tropical Depression
(cyclonic winds
33 knots or less)



Tropical Storm
(cyclonic winds
34 to 63 knots)



Hurricane
Northern Hemisphere
(cyclonic winds
64 knots or greater)

< 40%

40-60%

> 60%



MCRD PI/ERR

Tropical Cyclone Conditions (TCC)

1 June to 30 Nov = *Atlantic Hurricane Season*

| Condition | Winds | Time |
|-----------|----------|----------------------|
| TCC V | Seasonal | 1 Jun – 30 Nov |
| TCC IV | 39 MPH | <i>w/in 72 hours</i> |
| TCC III | 39 MPH | <i>w/in 48 hours</i> |
| TCC II | 39 MPH | <i>w/in 24 hours</i> |
| TCC I | 39 MPH | <i>w/in 12 hours</i> |
| TCC IC | 39 MPH | <i>w/in 6 hours</i> |
| TCC 1E | 39 MPH | <i>Imminent</i> |
| TCC 1R | 39 MPH | <i>Post Storm</i> |



South Carolina (OPCON)



OPCON ONE

“Full Alert”

A disaster or emergency is imminent or occurring.

The state emergency operations center is fully activated.

All state emergency response personnel are activated and ready to deploy.

OPCON TWO

“Enhanced Awareness”

A disaster or emergency is likely to affect the state.

Emergency Operations plans implemented.

The state emergency center is partially activated if necessary.

OPCON THREE

“Normal Daily Operations”

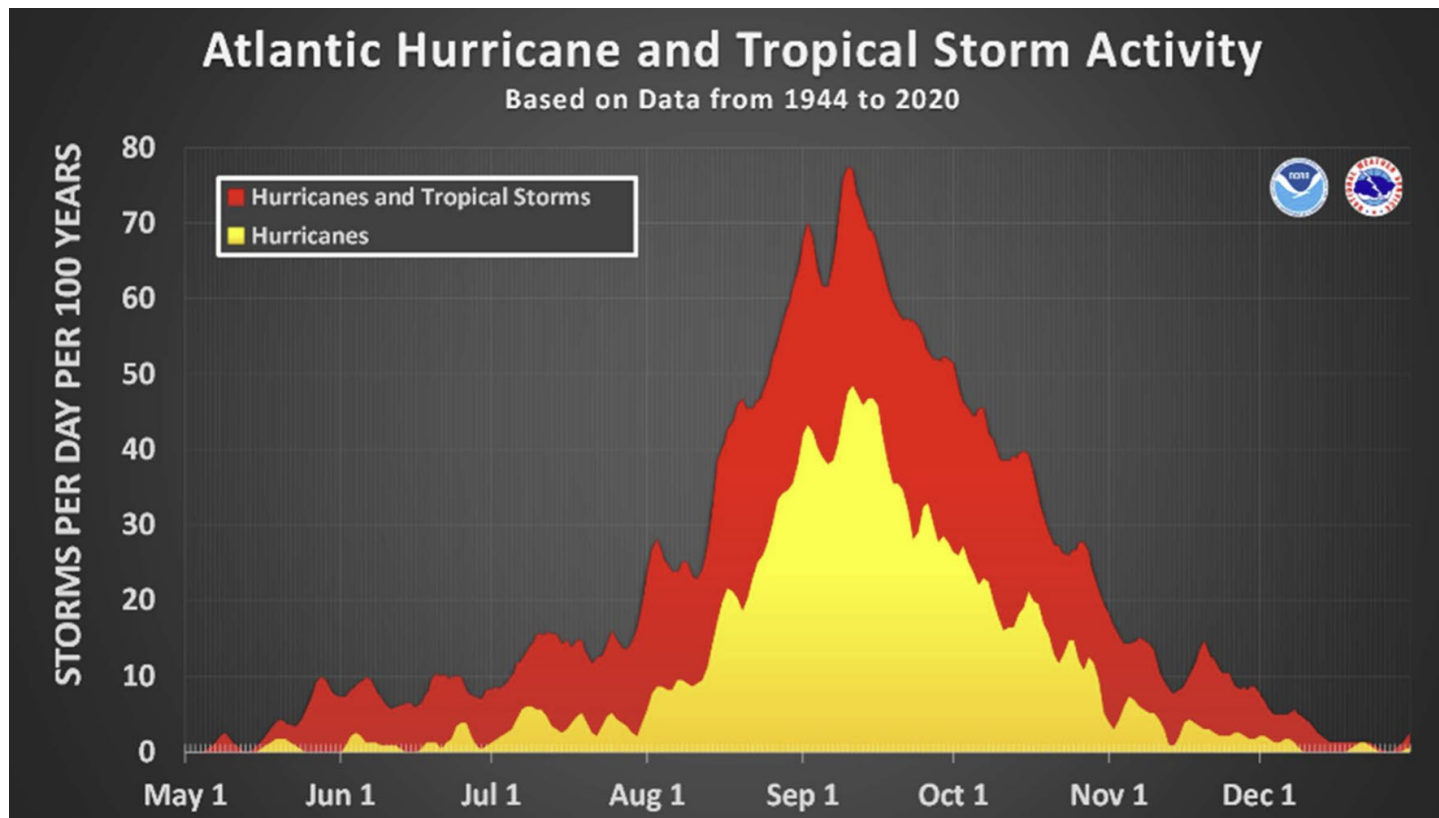
Agencies Coordinate, plan, and exercise as warranted.

Incidents are monitored by state warning point and local emergency managers.



Tropical Cyclone Activity

September has the most Tropical Storm Activity

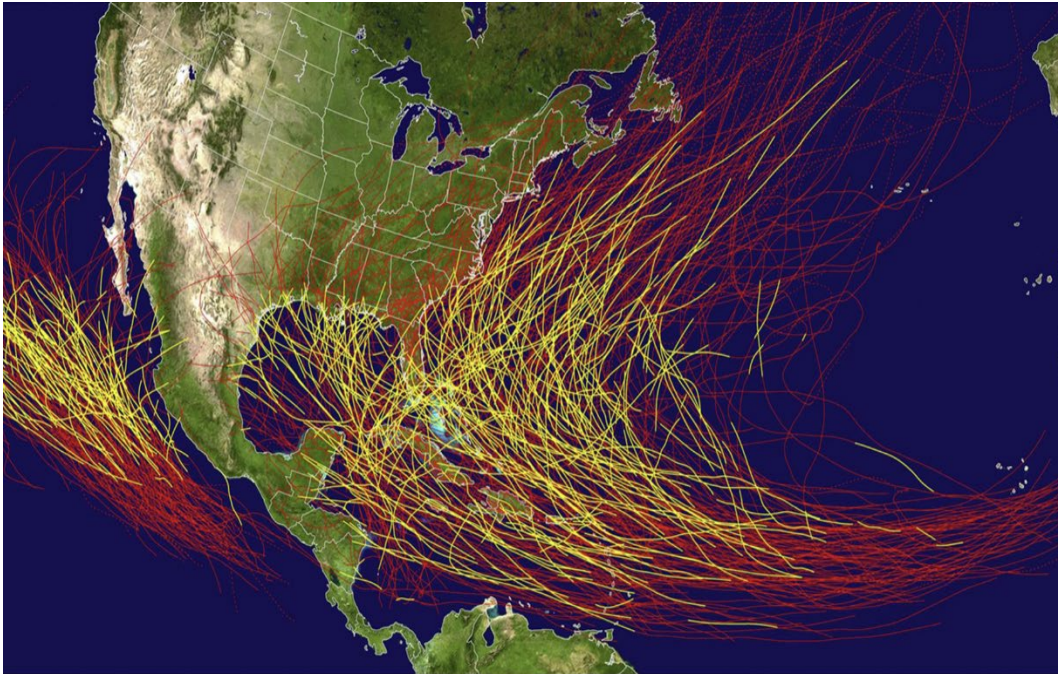




TRACKING THE STORM



Major Hurricane Tracks



- Data since 1949 in Pacific, 1851 in Atlantic

Cat 5 Landfalls

- Labor Day (1935)
- Camille (1969)
- Andrew (1992)
- Michael (2018)

5 Days Before: --



3 Days Before: Tropical Storm



Hurricane Threats



☐ Storm Surge/ Inland Flooding

- ☐ Parris Island 5-10ft above Sea Level; 17ft is highest
- ☐ Tidal Flow -1ft to +8Ft:
- ☐ Rip Currents
- ☐ 2025 Predicted King Tides:
 - ☐ March 30th
 - ☐ April 26-29
 - ☐ May 25-27
 - ☐ Oct 7-11
 - ☐ Nov 4-9
 - ☐ Dec 3-6

☐ Wind

☐ Tornados





Storm Surge



Storm Surge Definitions



FEMA

Storm Surge

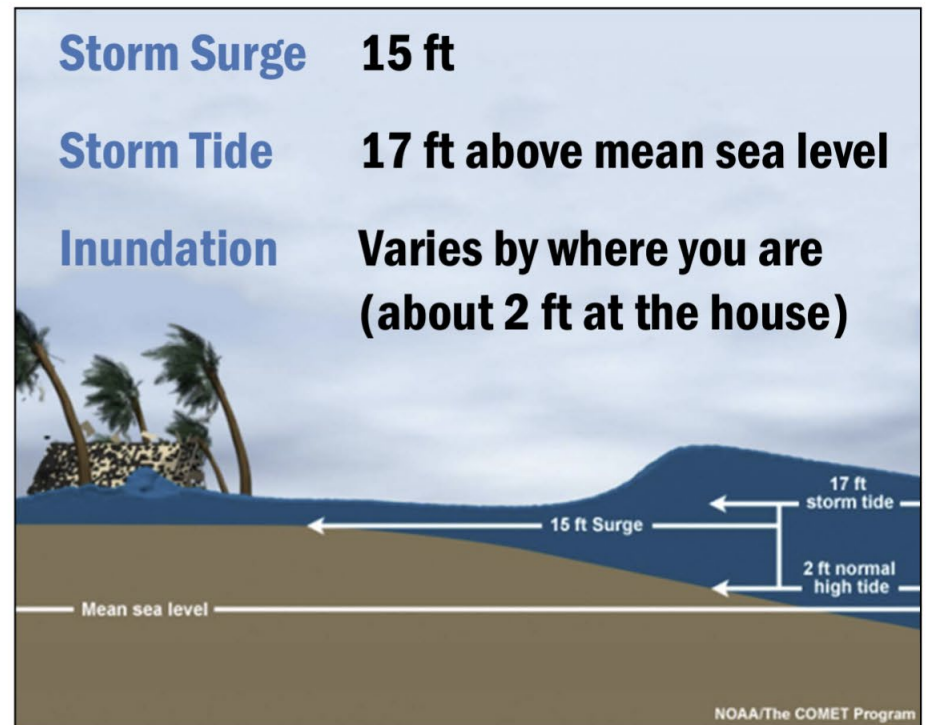
An abnormal rise of water generated by a storm, over and above the predicted astronomical tide.

Storm Tide

Water level due to the combination of storm surge and the astronomical tide.

Inundation

The flooding of normally dry land, resulting from storm tide and possibly other factors.





Storm Surge

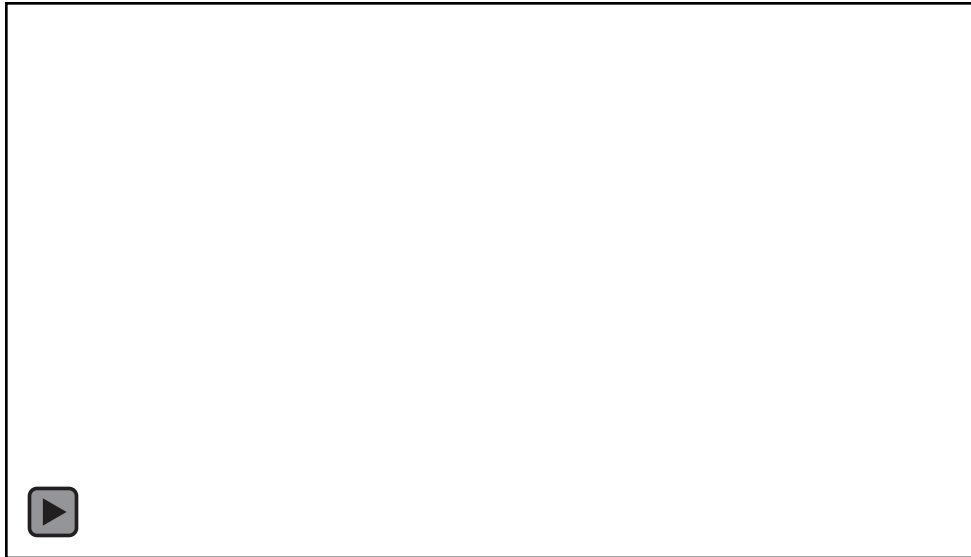
RUN FROM WATER, HIDE FROM WIND

Water weighs approximately 1,700 pounds per cubic yard

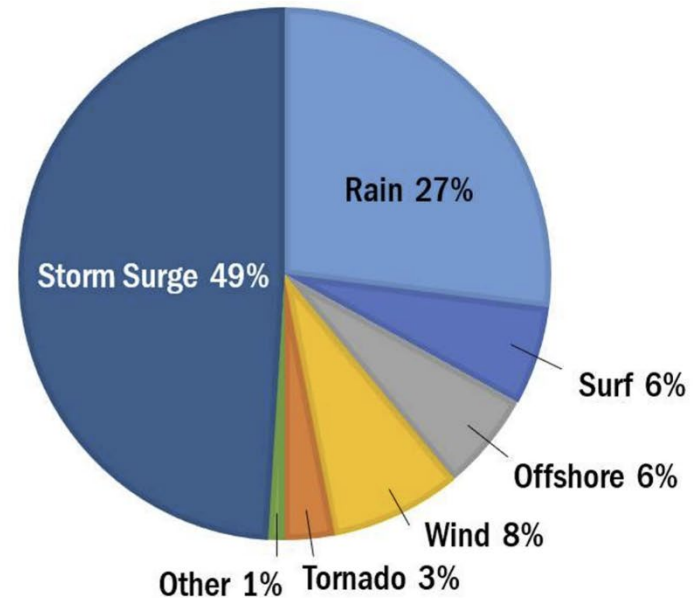
Direct Fatalities

U.S. Tropical Cyclone Direct Fatalities

– from 1963 to 2012



Surge animation of a small storm vs. a large storm pushing water



58

**STORM
SURGE:**

1-3 FEET

- Could knock you off your feet
- Could cause cars to stall
- Not passable to light vehicles



Hurricane Ian

Fort Myers Beach/Sanibel Island is 10-15 ft Above Sea Level



In this undated file photo, the Sanibel Island Causeway that connects Sanibel Island to Fort Myers, Fla., is shown.
Getty Images, FILE



Hurricane Ian

Cat 4/150mph Winds

Storm Surge 10-18ft

Fatalities: 131

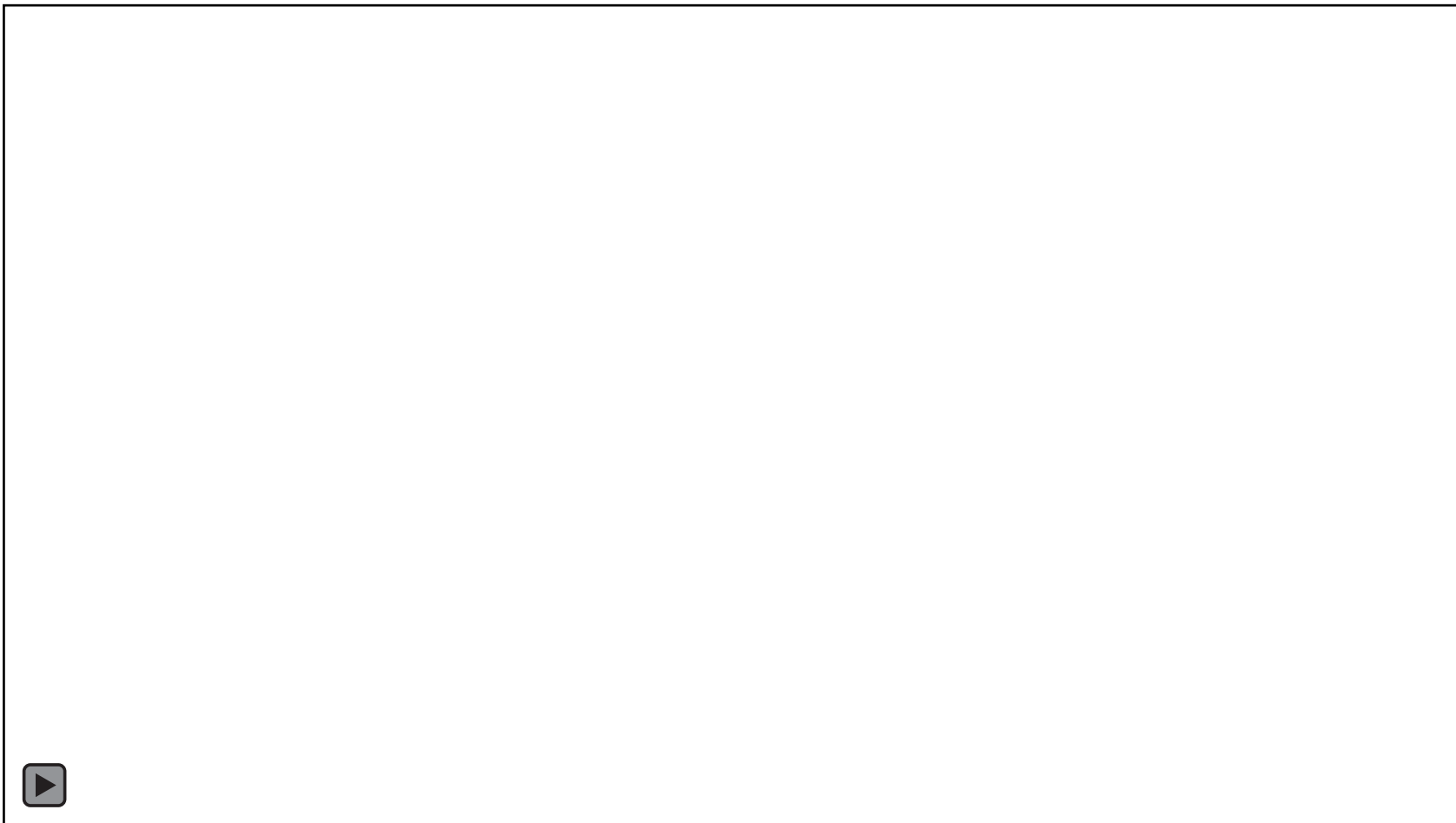
3.2 without power

210 Billion in damages





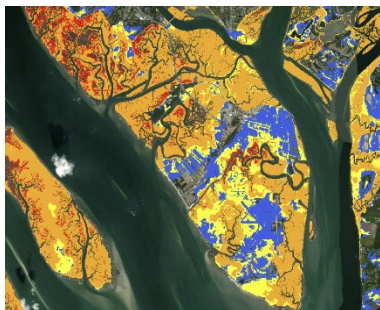
Hurricane IAN Storm Surge



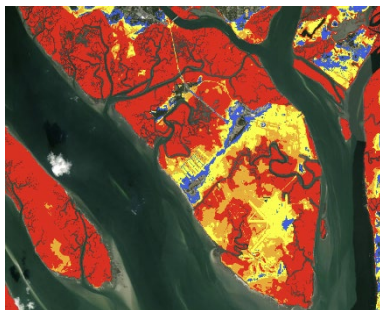


MCRDPI Models

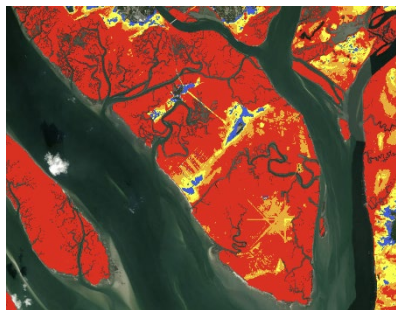
Cat 1



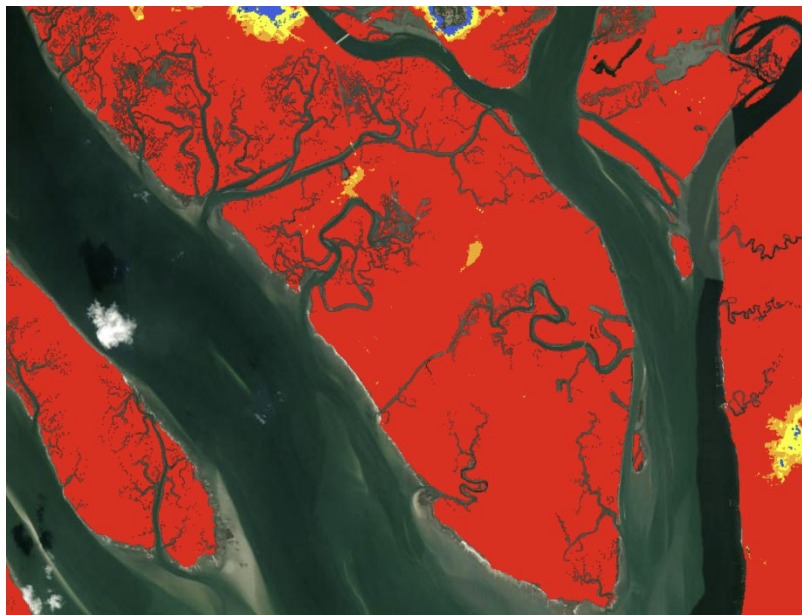
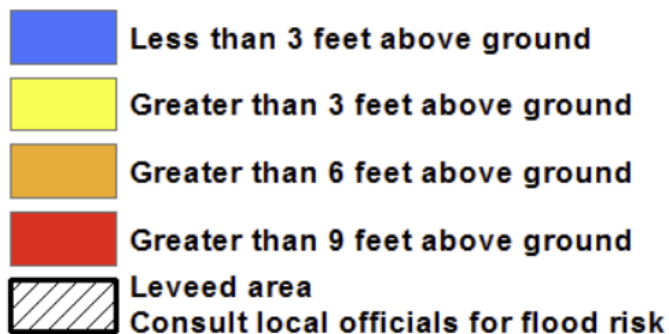
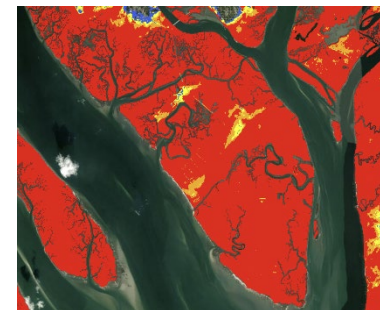
Cat 2



Cat 3



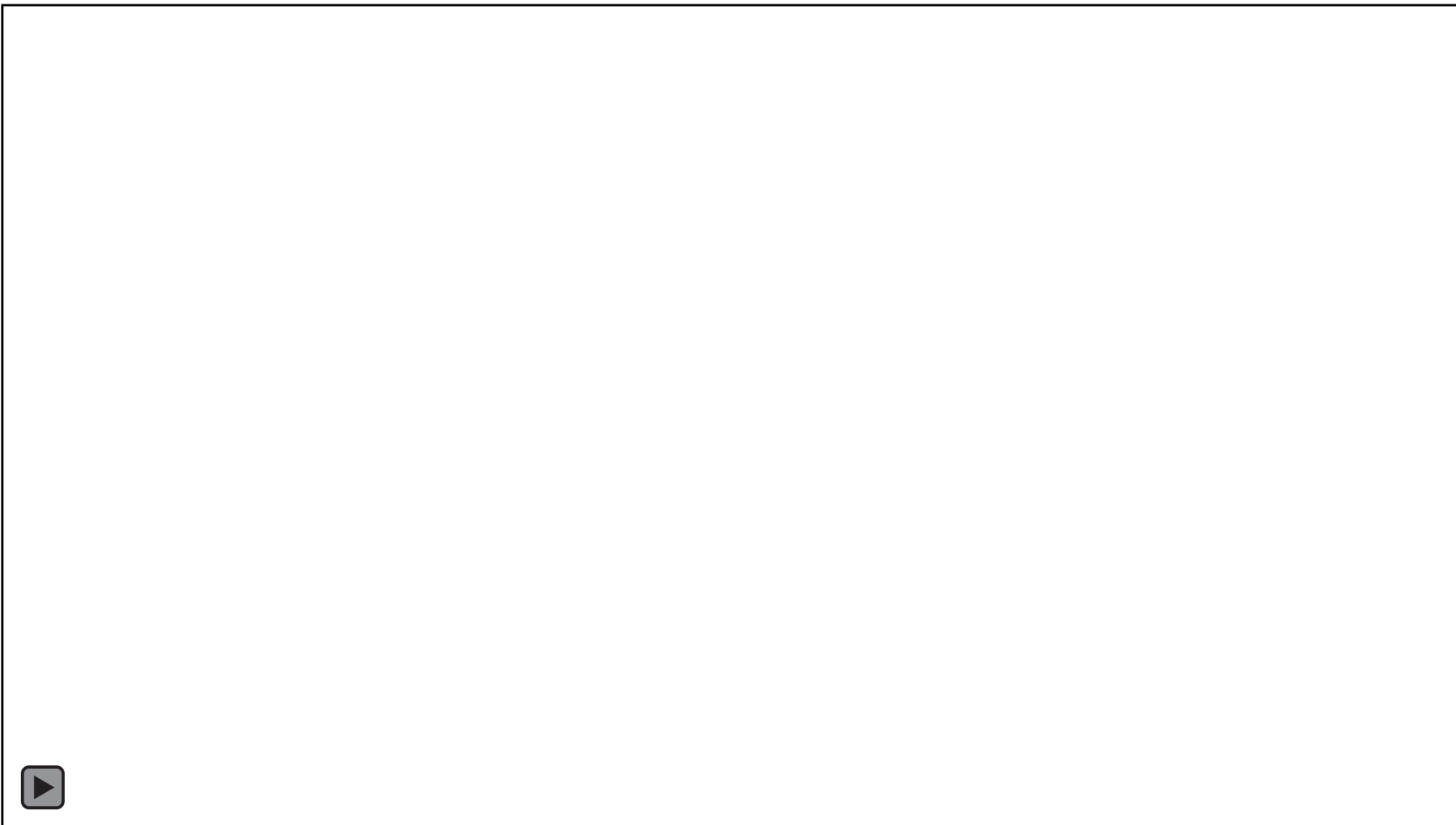
Cat 4



Cat 5



Wind Damage CAT 1-CAT 5





Wind Speed & Bridges

What to know about bridges



In the event of an approaching hurricane, the **South Carolina Department of Transportation** will shut down the operation of swinging bridges and draw bridges for all boat traffic when:

- Sustained winds reach 25 mph
- A mandatory evacuation is ordered

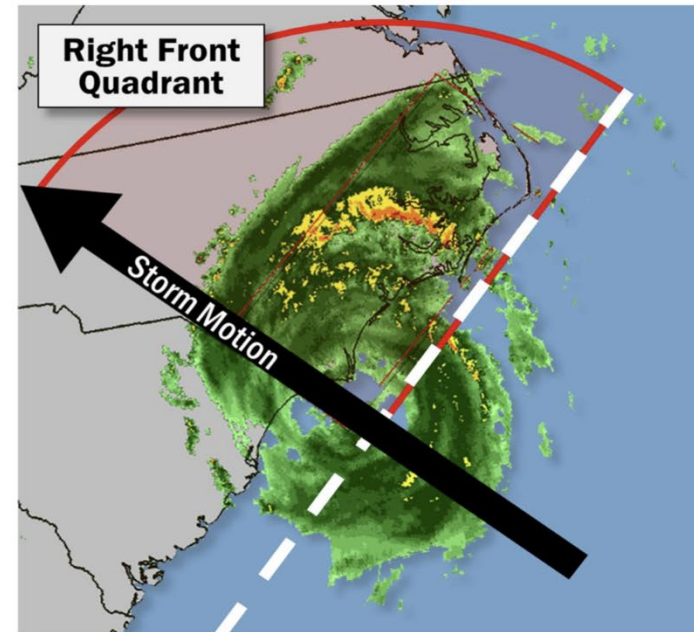
At sustained winds of 40 mph, **local law enforcement agencies** will notify the public that travel over those bridges are unsafe for travel and not for public use.



Tornados

Tornadoes in Hurricanes

- **Right-front quadrant**
Friction over land creates favorable conditions.
- **Outer rainbands**
Generally, form farther from the center – and the tornado potential continues after landfall.
- **Smaller and short-lived**
Tend to be less intense than those that occur in the Great Plains; however, some large or strong tornadoes have occurred.



71

- **70% of Landfalling Hurricanes produce at least one tornado**
- **40% of Landfalling Hurricanes produce more than three**



Don't Focus on Category

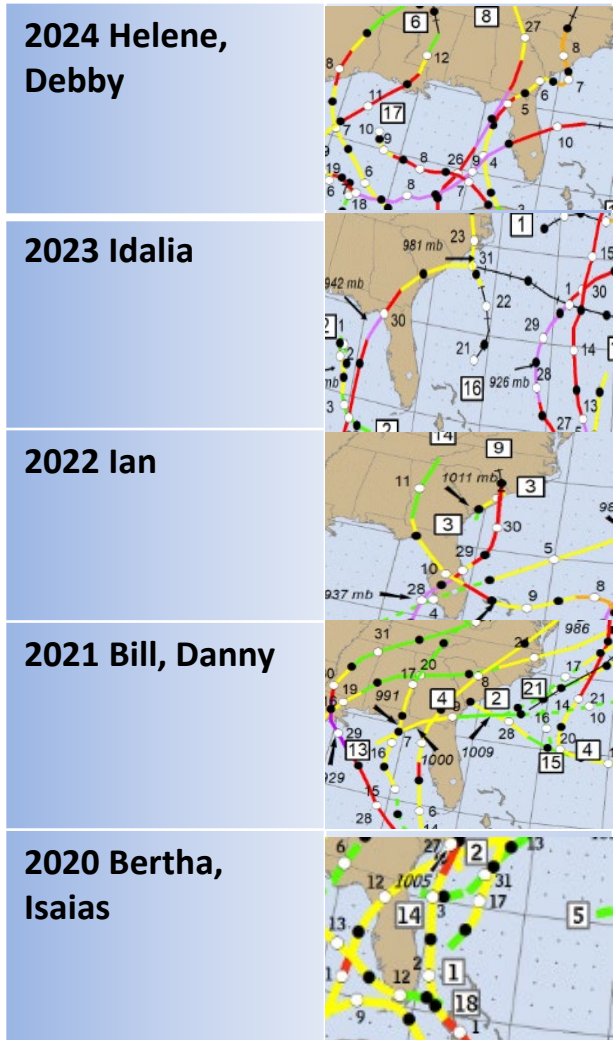
Right-front quadrant of a storm in the Northern Hemisphere carries higher winds, waves and storm surge

- **Damaging Winds**
78% of power lines in SC are above ground
- **Storm surge**
- **Flooding rains**
- **Severe thunderstorms**
- **Tornadoes**
- **Hail**
- **Deadly rip tides and surf**





Recent Hurricanes



Since 1851:

❑ (41) Tropical Cyclones have hit the SC/GA Corridor

25 Hurricanes (5) Major Hurricanes

9 Tropical Storms

7 Tropical Depressions

❑ (10) of those made landfall in Beaufort County



Major Storms in Beaufort



Sea Island Storm (1893)

- Cat 3/4
- High Tide/Storm Surge: 20-foot waves, on top of the storm surge of 10 to 12 feet deep
- Damages: 34 Million USD (today)
- Lives Lost: 3,500 (est.)



Hurricane Gracie (1959)

- Cat 4
- Low Tide/ Storm Surge: 6-8ft
- Damage: \$14 Million
- Lives Lost: 10

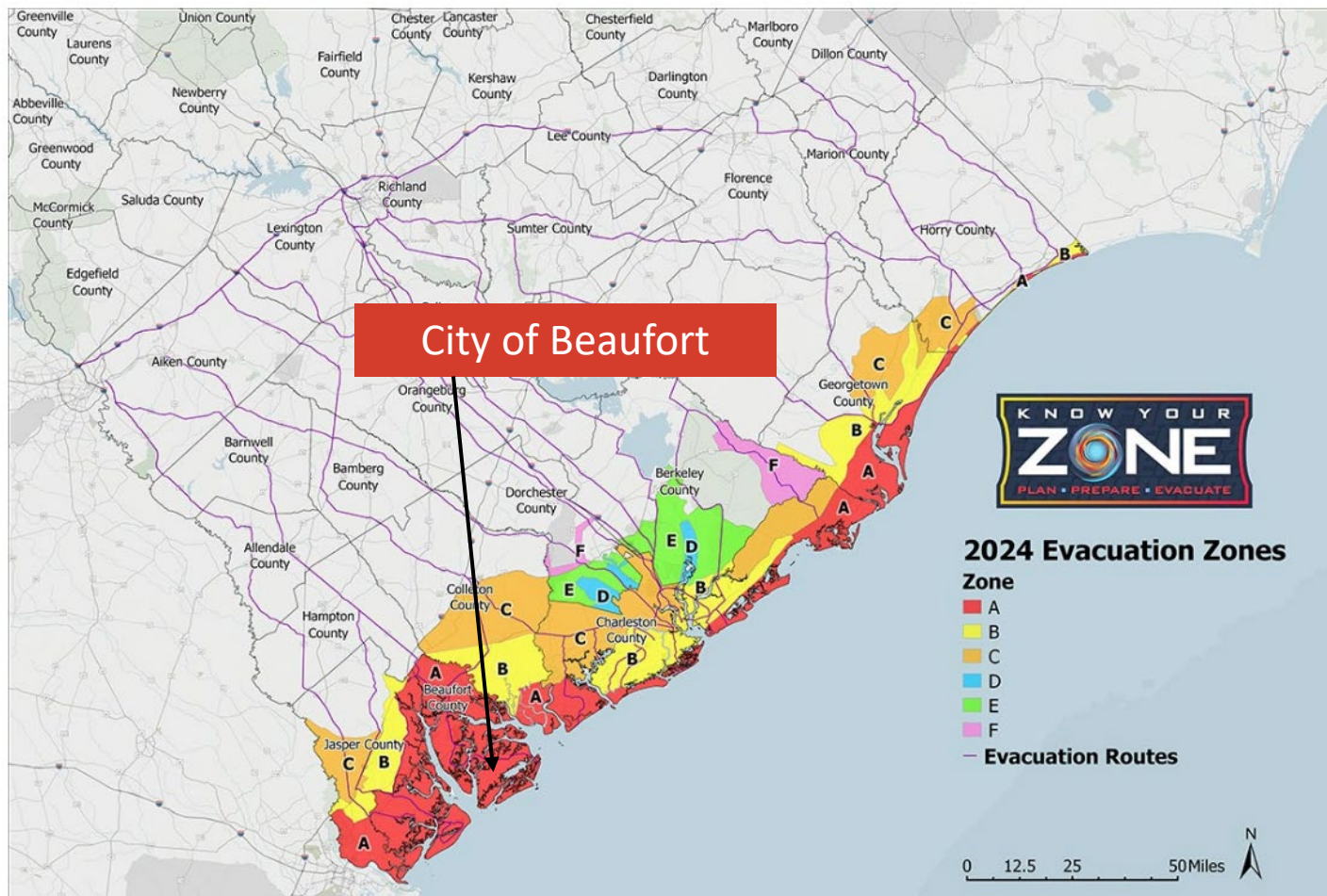


Damage at Parris Island, SC from Gracie. Image courtesy of U.S. Marine Corps, Parris Island, SC.



KNOW Your ZONE

MCRDPI:
ZONE A





Evacuation

- Governor of SC makes the evacuation decisions for SC
- **The CG makes the evacuation decisions for MCRD Parris Island**
- Voluntary Evacuation
 - You *will not* be reimbursed
- Mandatory Evacuation
 - You *will be* reimbursed for expenses relating to evacuation
 - Entitlements end on CG's Termination Order
 - The Evacuation Order will define the parameters
 - RBE/TF's will be considered TAD.



Evacuation- 4 Tiers

- **Tier 1:** Mission Essential Personnel “RBE”
- **Tier 2:** Personnel who report elsewhere to support operations. “TFA”
- **Tier 3:** Delayed Release/Early Return
 - Re-Entry Cards
- **Tier 4:** Non-Mission Essential

DEPOT ORDER 3000.1L Destructive Weather Order



GTCC



- GTCCs are activated upon an ordered Evacuation
- FOR OFFICIAL TRAVEL RELATED EXPENSES:
 - Lodging (Limited to locality per diem rate)
 - Mileage (up to ordered limits)
 - Tolls & Hotel Parking (least expensive)
 - Meals
- DTS HELP DESK: 843-228-4926/843-228-3491
- Voucher Settlement:
 - Vouchers will be submitted to the Finance office through BN S1's

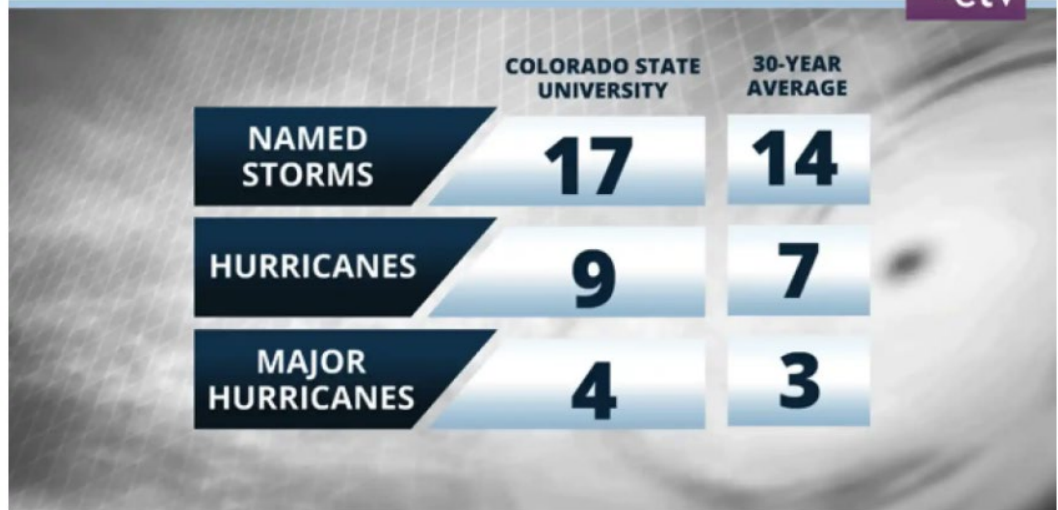


2025 Predictions

2025 Tropical Cyclone Names

| | |
|-----------|-----------|
| Andrea | Lorenzo |
| Barry | Melissa |
| Chantal | Nestor |
| Dexter | Olga |
| Erin | Pablo |
| Fernand | Rebekah |
| Gabrielle | Sebastian |
| Humberto | Tanya |
| Imelda | Van |
| Jerry | Wendy |
| Karen | |

2025 HURRICANE SEASON FORECAST



The probability of U.S. and Caribbean major hurricane landfall is estimated to be above its long-period average



ATHOC



- **All depot personnel** must register in ATHOC
- **“After-hours” contact information**
- **Assign** yourself to correct section.
- **Change Organization** if you are still assigned to your old unit.

Basic Information

| | |
|-------------------------|--|
| Username | [REDACTED] |
| Mapping ID | [REDACTED] |
| First Name | ANDREA |
| Last Name | FABIAN |
| Display Name | ANDREA FABIAN |
| Created On | 09/06/2013 14:03:37 |
| Status | Enabled |
| MCRD Parris Island | /CHIEF OF STAFF/G-3/Installation Protection n/ |
| Temporary work location | No address found |
| User ID | 2100637 |

Numbers



Notifications



Local Radio Stations

DBC Radio Group

Bluffton

WHHW 93.5 FM/1130 AM (Classics/Oldies)

Savannah

WGCO 98.3 FM (Top 40)

WRWN 107.9 FM (Classic Hits)

WUBB 106.9 FM (Country)

WFXH 106.1 FM (Active Rock)

WXYX 100.1 FM (Classic Hip Hop)

Lowcountry Radio Group

WOEZ 93.7 FM (Adult Contemporary)

WVSC 99.1 FM / 106.5 FM (Oldies)

WVSC 103.1 FM (Adult Contemporary)

WLHH 104.9 FM (Classic Hits)

Local TV Stations

WTOG

WSAV

WJCL

WTGS Fox 28

Other Communication

Beaufort County Sheriff's

Office Storm Center

Everbridge App Facebook

NextDoor

Twitter



Questions?



Andrea Fabian, Installation Emergency Manager

andrea.fabian@usmc.mil

843-228-4929

SSgt Dustin Mcpherson, EOC Chief

dustin.mcpherson@usmc.mil

843-228-3349

Gary Hoffman, CBRNE/CIP Officer

peter.shannon@usmc.mil

843-228-4929

Serge Watson, AT Officer

syranard.watson@usmc.mil

843-228-4765

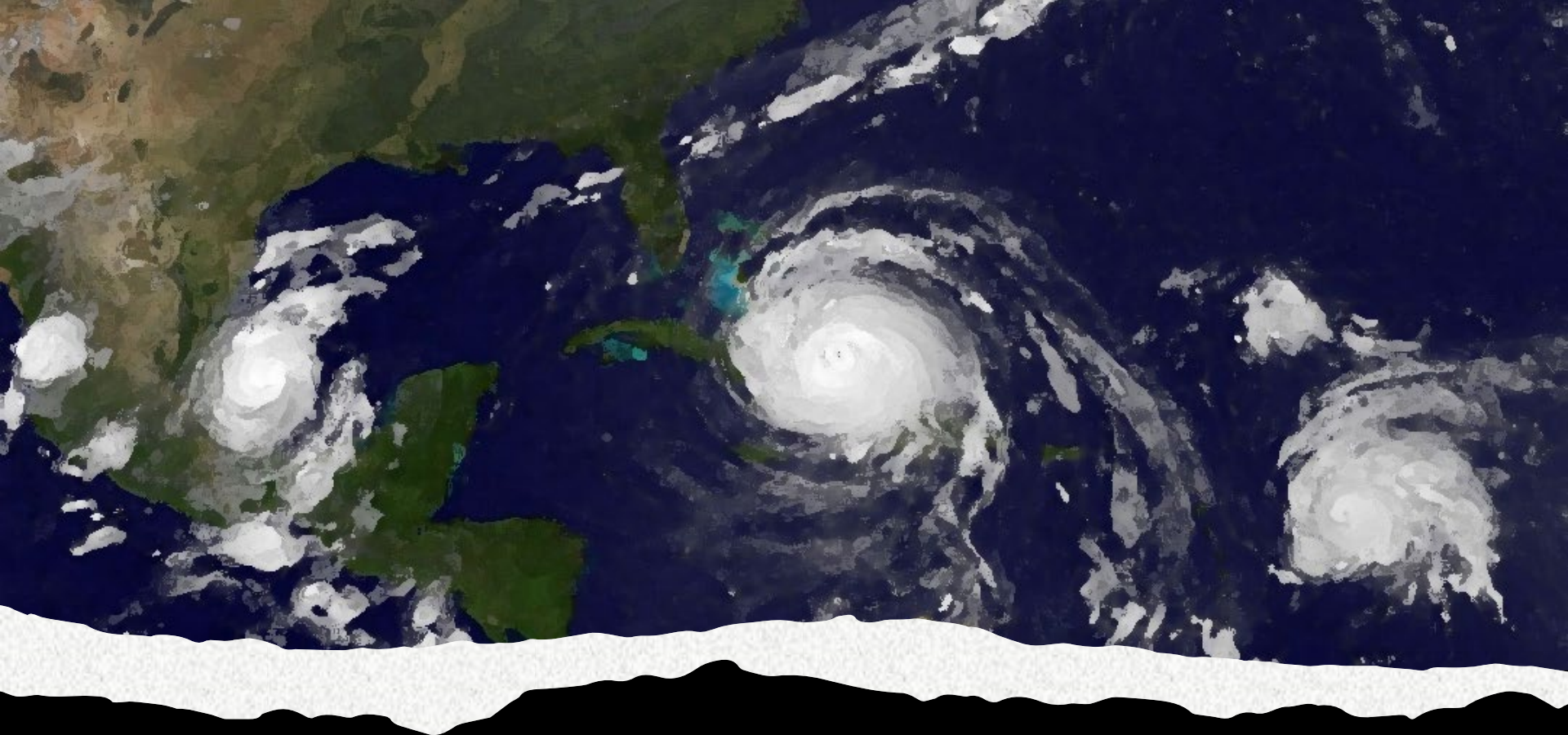
Drew Smith, Mission Assurance Chief

andrew.h.smith@usmc.mil

843-228-2035

MCRDPI/ERR EMERGENCY MANAGEMENT DIVISION

https://usmc.sharepoint-mil.us/sites/TECOM_MCRDPI_MA/SitePages/Emergency%20Management.aspx



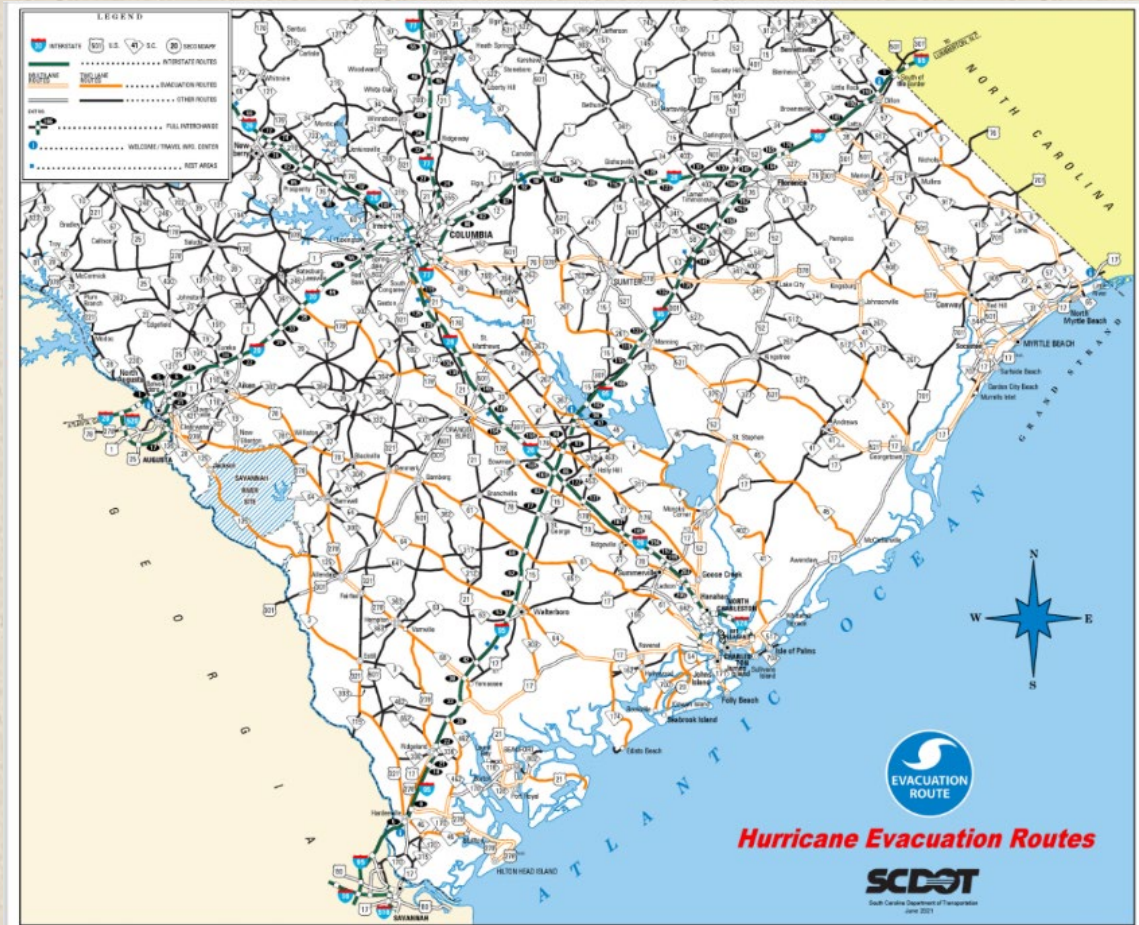
1 June – 30 November

*Plan and
Prepare*

Develop an Evacuation Plan

**Plan for the short-term
and the long-term**

*Think in terms of key
infrastructure being
down and limited
services for an
extended period
(power, water, fuel,
groceries, roadways,
healthcare)*



Reserve a hotel room early!!!

Before You Evacuate

- Turn off utilities
- Secure outdoor items
- Vehicle maintenance
- Photograph or video your household goods before you leave. This is a big help if you need to file an insurance claim.
- Place insurance policies and all important papers & documents such as passports, birth & marriage certificates, vehicle titles, big-ticket items / receipts in one safe, centrally located and easy to grab in case of evacuation
- Decide in advance what to do with valuable personal property such as collections of stamps, sports cards, coins, and expensive jewelry in case of evacuation
- If you recently PCS'd to MCRDPI, mail the pick-up household inventory to someone for safe keeping
- Make a video/ photographs of property and mail them to someone in a safe location

Prepare the Kids

- Talk about potential hazards.
- Designate a family meeting place.
- Know the school's plans for your child.
- Make a communication plan.
- Practice your family emergency plan with children.
- Have a current Family Care Plan.



Evacuation Kit

- Prescription Medications
- Food and Water (3 day supply)
- Flashlights / Batteries
- Valuables / Photos
- Blankets / Spare Clothing
- Portable Radio
- First Aid Kit
- Manual Can Opener
- Canned / Dry Foods
- Baby Items
- Important Documents / Cash
- Children's entertainment



Vehicle Preparation & Emergency Kit

- **Pre-Storm**
 - Gas up all vehicles in preparation of evacuation and ensure maintenance of the vehicle
 - Check brakes, tires, battery, fire extinguisher, windshield wipers, road side kit
 - Pack an on-the-road safety kit (flashlight, tools, water/food)
- **Emergency Kit**
 - Food, water, flashlights and extra batteries, first aid kit and necessary medications, signal flares, repair tools, portable AM/FM radio, rain gear, engine fluids, comfortable/sturdy shoes, and blankets or sleeping bags
 - Also consider: cell phone and phone charger, reflective triangle, and baby formula and diapers if you have a small child



Pets

- Bring pets inside
- Check your pet's ID
- Ensure vet records are current and up-to-date
- Have a plan for shelter
- Make a pet emergency supplies kit



If you evacuate, take your pets with you!



For The Trip

- Credit/Debit cards
- Comfort items
- Important phone numbers
- Chargers for smart devices
- Account numbers and passwords
- Irreplaceable items: photo albums, jewelry, passports, birth certificates, marriage license...
- 30-day supply of medications
- Pet supplies including a kennel or crate.



Before You Return

- Minimum \$100 cash in small denominations
- First Aid kit (new or replenished)
- Toilet paper/baby wipes
- **Water**
 - 1 Gallon/per person/per day (3-5 day minimum)
- **Non-perishable foods** (3-5 day minimum)
 - Manual can opener
- 1 flashlight per person + batteries
- Wet weather clothing, including waterproof boots or shoes.



No Power = No Cash or Gas

Post-Storm

- **Post-Storm**
 - Return when the area has been deemed safe by appropriate authorities
 - Be aware of electrical lines. Never attempt to move a downed power line
 - Use protective equipment such as gloves when cleaning up after the storm. Snakes, rats and other hazardous wildlife find debris piles to be a great place to live after storms
 - Many areas on base may be underwater
 - Avoid driving through or parking in low-lying areas
- **Generator Safety**
 - Never operate indoors
 - Includes: garages, basements, crawlspaces, sheds
 - Can cause Carbon Monoxide (CO) poisoning

Post-Storm Kit

- Basic tool kit
- Multi-tool/knife
- Duct Tape
- Gloves
- Plastic Tarps
- Garbage Bags
- Rope
- Generator + gas
- Propane/charcoal
- Bleach
- Tub/sinks filled with water
- Chain saw/hand saw
- Lighter/matches



Communications/Information

☐ Depot :

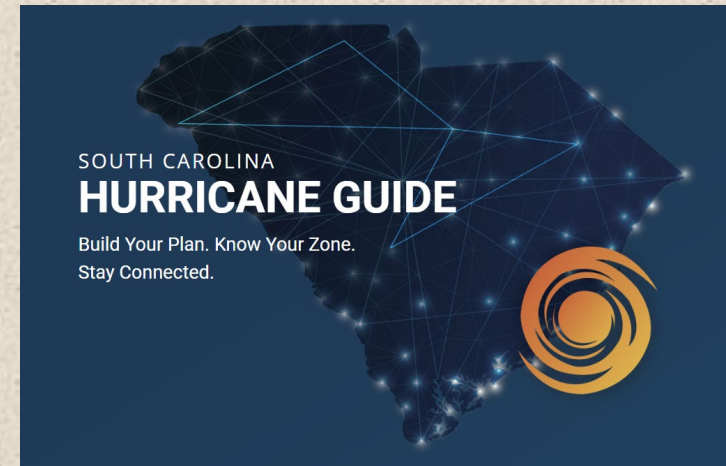
- 1-800-343-0639, Option #3
- MCRD PI Facebook:



☐ County will control return to Beaufort Area:



- 1-800-963-5023
- www.bcgov.net



☐ South Carolina Emergency Management

- www.scemd.org
- <http://scemd.org/stay-informed/publications/hurricane-guide/>
- SCEMD App – on iTunes® and Google Play® App Stores





**American
Red Cross**

American Red Cross



FEMA



Helpful Resources



Ready.gov



[Ready America](#) | [Ready Business](#) | [Ready Kids](#) | [En Español](#)

Search:



- 1 Get A Kit
- 2 Make A Plan
- 3 Be Informed

Emergencies can range from inconvenient to devastating.



[Click Here](#) to watch Ready's Instructional Videos.

Special Preparedness Information For | Checklists and Downloads | Community and State Information

- National Preparedness Month 2008
- Hurricane Preparedness
- [New Testimonial](#)
- Minor League Baseball Partnership

Featured Ready Content

[Register to Become a NPM Coalition Member](#)



[Older Americans](#)

[People With Disabilities](#)

[Pet Owners](#)

Downloading and Ordering all Ready Publications



- [Get A Kit Checklist](#)
- [Ready Brochure](#)
- [Family Emergency Plan](#)

• [Adobe Acrobat Reader](#) required.

Want to reach your state or local government to see how you can prepare for events that happen in your area?



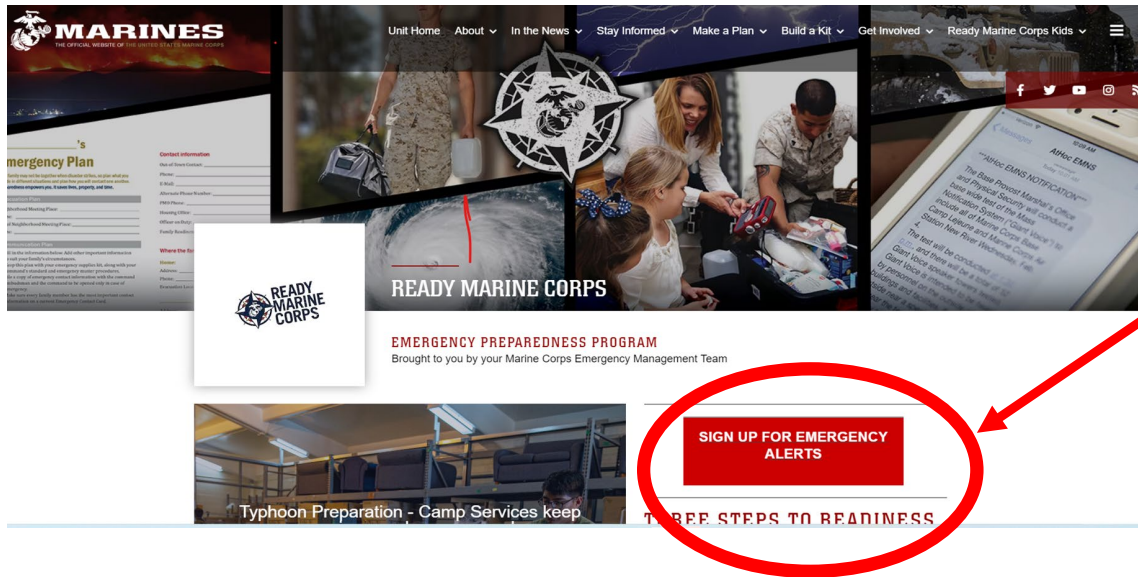
Use the menu below or [click here](#).

Jump to a state or territory...

[Home](#) | [About Ready.gov](#) | [Publications](#) | [FAQs](#) | [Useful Links](#) | [Press Room](#) | [Site Map](#) | [Contact Ready.gov](#)
[Privacy Policy](#) | [Important Notices](#) | [FOIA](#) | [USA.GOV](#) | [En Español](#) | [Download Flash Player](#)
National Preparedness Month 2008

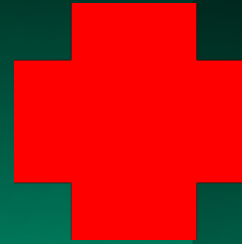


Ready Marine Corps




<https://www.ready.marines.mil/>

American Red Cross



Mobile Apps


**Wildfire**

Get preparation tips, news and updates on active wildfires. Plus, let loved ones know you're safe even if the power is out.

Disponible en español

Download on the App Store

GET IT ON Google Play

**Flood**

Learn and prepare your family and friends for flooding, evacuation and a safe return home.


Disponible en español


Download on the App Store

GET IT ON Google Play

Or text: "GETFLOOD" to 90999

App sponsored by:



**Emergency**

This all-inclusive app lets you monitor more than 35 different severe weather and emergency alerts, to help keep you and your loved ones safe.


Disponible en español


Download on the App Store

GET IT ON Google Play

Or text: "GETEMERGENCY" to 90999

App sponsored by:



**Tornado**

Receive weather alerts whenever the NOAA issues a tornado watch or warning for your community – or any location where you have loved ones.


Disponible en español


Download on the App Store

GET IT ON Google Play

Or text: "GETTADO" to 90999

App sponsored by:



**Hurricane**

Monitor hurricane conditions in your local area, throughout the storm track, and let others know you are safe when the power is out.


Disponible en español


Download on the App Store

GET IT ON Google Play

Or text: "GETCAN" to 90999

App sponsored by:



**Earthquake**

Receive notification when an earthquake occurs, find help and let others know you're safe even if the power is out.


Disponible en español


Download on the App Store

GET IT ON Google Play

Or text: "GETEQUAKE" to 90999

App sponsored by:



**Hero Care**


Whether you're the parent of a child joining the military or a member of the military/veteran community, Hero Care will connect you to important resources that can help you through both emergency and nonemergency situations.


Download on the App Store

GET IT ON Google Play

Or text: "GETHEROCARE" to 90999

App sponsored by:



**First Aid**


Get instant access to information on handling the most common first aid emergencies.


Download on the App Store

GET IT ON Google Play

Or text: "GETFIRST" to 90999

App sponsored by:



**Blood**


Schedule blood donation appointments, track total donations and earn rewards as you help us meet the constant need for blood.


Download on the App Store

GET IT ON Google Play

Or text: "BLOODAPP" to 90999

App sponsored by:



**Pet First Aid**


Be prepared to help your furry friends with veterinary advice in everyday emergencies.

Download on the App Store

GET IT ON Google Play

Or text: "GETPET" to 90999

App sponsored by:





Communications/Information

☐ Depot :

- 1-800-343-0639, Option #3
- MCRD PI Facebook:



☐ County will control return to Beaufort Area:



- 1-800-963-5023
- www.bcgov.net



☐ South Carolina Emergency Management

- www.scemd.org
- <http://scemd.org/stay-informed/publications/hurricane-guide/>
- SCEMD App – on iTunes® and Google Play® App Stores





Questions?